

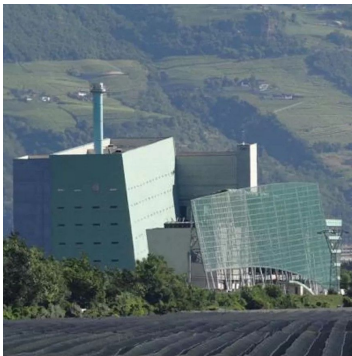
ITALY



- IT_0001
- ACERRA INCINERATION PLANT
- TERMOVALORIZZATORE DI ACERRA
- 728,969 tonnes. 107.5MWe, 340MWt



- IT_0002
- AREZZO INCINERATION PLANT
- AREZZO IMPIANTI E SERVIZI AMBIENTALI SPA
(AISA SPA)
- 45,069 tonnes. 2.9MWe, 14.5MWt



- IT_0005
- BOLZANO (BOZEN) INCINERATION PLANT
- ECO CENTER SPA
- 135,040 tonnes. 15MWe, 59MWt



- IT_0004
- BERGAMO INCINERATION PLANT
- TERMOVALORIZZATORE DI BERGAMO
- 55,005 tonnes. 10.6MWe, 48MWt



- IT_0011
- RIMINI (CORIANO) INCINERATION PLANT
- HERA SPA
- 147,663 tonnes. 13MWe, 46.5MWt



- IT_0006
- BRESCIA INCINERATION PLANT
- A2A AMBIENTE
- 721,167 tonnes. 117MWe, 305MWt



- IT_0013
- CREMONA INCINERATION PLANT
- AEM CREMONA SPA
- 76,569 tonnes. 6.1MWe, 35.6MWt



- IT_0008
- BUSTO ARSIZIO INCINERATION PLANT
- ACCAM SPA
- 80,263 tonnes. 11MWe, 61MWt



- IT_0015
 - DESIO INCINERATION PLANT
 - TERMOVALORIZZATORE DI DESIO
 - 90,128 tonnes. 8.25MWe, 42MWt



- IT_0010
 - COMO INCINERATION PLANT
 - TERMOVALORIZZATORE DI COMO
 - 85,756 tonnes. 5.8MWe, 39MWt



- IT_0019
 - FORLÌ INCINERATION PLANT
 - HERA SPA
 - 119,993 tonnes. 10.6MWe, 46.5MWt



- IT_0012
 - CORTEOLONA INCINERATION PLANT
 - A2A AMBIENTE SPA
 - 69,413 tonnes. 8.1MWe, 34MWt



- IT_0021
 - GIOIA TAURO INCINERATION PLANT
 - VEOLIA SERVIZI AMBIENTALI SPA
 - 39,965 tonnes. 17.3MWe, 60MWt



- IT_0014
 - DALMINE INCINERATION PLANT
 - REA DALMINE SPA
 - 150,261 tonnes. 15.5MWe, 55.8MWt



- IT_0023
 - LIVORNO INCINERATION PLANT
 - TERMOVALORIZZATORE DI LIVORNO
 - 69,890 tonnes. 6.7MWe, 31.2MWt



- IT_0016
 - FERRARA - CASSANA INCINERATION PLANT
 - HERA SPA
 - 129,912 tonnes. 13MWe, 55.8MWt



- IT_0027
 - MELFI INCINERATION PLANT
 - FENICE SPA
 - 36,151 tonnes. 7.3MWe, 50.1MWt



- IT_0020
 - FUSINA INCINERATION PLANT
 - VERITAS
 - 80,000 tonnes. 16MWe, 47.8MWt



- IT_0029
 - MILANO - SILLA INCINERATION PLANT
 - TERMOVALORIZZATORE SILLA 2
 - 572,339 tonnes. 59MWe, 196.9MWt



- IT_0022
 - GRANAROLO (BOLOGNA) INCINERATION PLANT
 - GRUPPO HERA
 - 208,861 tonnes. 22MWe, 81.4MWt



- IT_0031
 - MONTALE INCINERATION PLANT
 - TERMOVALORIZZATORE DI MONTALE
 - 41,190 tonnes. 7.7MWe, 28.5MWt



- IT_0024
 - MACCHIAREDDU (CAPOTERRA) INCINERATION PLANT
 - TECNOCASIC SPA
 - 136,724 tonnes. 9.4MWe, 254MWt



- IT_0033
 - PACE INCINERATION PLANT
 - INCENERITORE DI PACE
 - 66,600 tonnes.



- IT_0026
 - MASSAFRA INCINERATION PLANT
 - APPIA ENERGY
 - 60,524 tonnes. 12.3MWe, 49.5MWt



- IT_0035
 - PARMA INCINERATION PLANT
 - INCENERITORE DI PARMA
 - 160,701 tonnes. 17.8MWe, 71.4MWt



- IT_0030
 - MODENA INCINERATION PLANT
 - HERA SPA
 - 211,326 tonnes. 24.8MWe, 78MWt



- IT_0037
 - PIACENZA INCINERATION PLANT
 - TECNOBORGO SPA
 - 114,231 tonnes. 12MWe, 45.3MWt



- IT_0032
 - OSPEDALETTO INCINERATION PLANT
 - TERMOVALORIZZATORE DI PISA
 - 69,000 tonnes. 4.4MWe, 20.5MWt



- IT_0039
- POGGIBONSI INCINERATION PLANT
- SIENAMBIENTE
- 68,312 tonnes. 9.9MWe, 35MWt



- IT_0034
- PADOVA INCINERATION PLANT
- HERA AMBIENTE
- 169,251 tonnes. 18.1MWe, 79.8MWt



- IT_0041
- POZZILLI INCINERATION PLANT
- ENERONUT SPA
- 85,039 tonnes. 13.2MWe, 47MWt



- IT_0036
- PARONA INCINERATION PLANT
- LOMELLINA ENERGIA SRL PARONA
- 230,194 tonnes. 44.8MWe, 147.8MWt



- IT_0045
- RUFINA INCINERATION PLANT
- AMBIENTE ENERGIA RISORSE SPA (AER SPA)
- 10,000 tonnes.



- IT_0040
- POTENZA INCINERATION PLANT
- VEOLIA SERVIZI AMBIENTALI SPA
- 24,000 tonnes. 1.2MWe



- IT_0047
- SCARLINO INCINERATION PLANT
- COGENERATORE DI SCARLINO
- 156,812 tonnes. 18.5MWe, 75MWt



- IT_0042
- RAVENNA INCINERATION PLANT
- HERA SPA
- 37,835 tonnes. 6.3MWe, 27.8MWt



- IT_0049
- SESTO SAN GIOVANNI INCINERATION PLANT
- CORE SPA
- 67,473 tonnes. 5.5MWe, 31.3MWt



- IT_0044
- ROMA - MALAGROTTA INCINERATION PLANT
- INCENERITORE DI MALAGROTTA
- 14,600 tonnes. 36MWe



- IT_0053
 - TORINO - GERBIDO INCINERATION PLANT
 - TERMOVALORIZZATORE DI GERBIDO
 - 533,240 tonnes. 66MW_e, 206.3MWt



- IT_0046
 - SAN VITTORE DEL LAZIO INCINERATION PLANT
 - INCENERATORE DI SAN VITTORE DEL LAZIO
 - 357,174 tonnes. 51.3MW_e, 160MWt



- IT_0055
 - TRIESTE INCINERATION PLANT
 - ACEGAS APS
 - 154,511 tonnes. 17.5MW_e, 67.3MWt



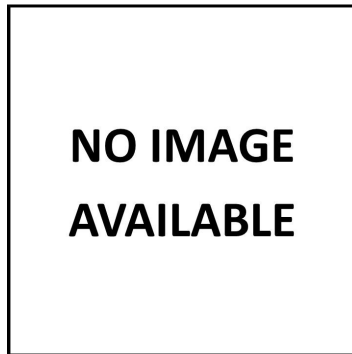
- IT_0048
 - SCHIO INCINERATION PLANT
 - ALTO VICENTINO AMBIENTE SRL
 - 86,055 tonnes. 6.7MW_e, 39.3MWt



- IT_0059
 - MANFREDONIA INCINERATION PLANT
 - ENERGIE TECNOLOGIE AMBIENTE S.R.L. (ETA)
 - 147,000 tonnes. 14MW_e, 61.9MWt



- IT_0050
 - STATTE INCINERATION PLANT
 - AMIU SPA
 - 66,600 tonnes. 3.5MW_e



- IT_0052
 - TOLENTINO - POLLENZA INCINERATION PLANT
 - TERMOVALORIZZATORE DI TOLENTINO-POLLENZA
 - 23,300 tonnes.



- IT_0054
 - TREZZO SULL'ADDA INCINERATION PLANT
 - TERMO TREZZO
 - 147,677 tonnes. 20.2MW_e, 82.4MWt




- IT_0056
- VALMADRERA INCINERATION PLANT
- SILEA SPA
- 100,691 tonnes. 10.5MWe, 45.3MWt



- IT_0058
- VERONA - CA'DEL BUE INCINERATION PLANT
- TERMOVALORIZZATORE CÀ DEL BUE
- 192,000 tonnes.

Information from the European EFW Dashboard from Footprint Services, giving interactive profile data and mapping on all Energy from Waste facilities across Europe and Scandinavia:



Footprint Services
Sustainability for good

+44 (0) 7791 304190
andrew@footprintservices.co
www.footprintservices.co

Total Capacity (Tonnes)

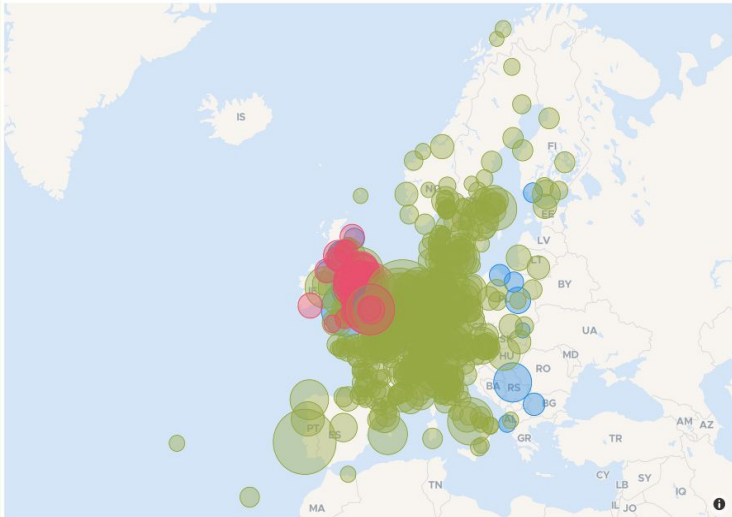
125.17M

European EFW Dashboard





Last Updated: 19th August 2021

Country:

European EFW Map (MSW EFW only)



European EFW Tabular Report

Country	Image	Type	Plant Name	Operator	Postco
3 Austria		MSW EFW	Arnoldstein Incineration Plant	Kärntner Restmüllverwertungs GmbH (KRV)	9601
4 Austria		MSW EFW	Lenzing Incineration Plant	RVL Lenzing GmbH	4860
5 Austria		MSW EFW	Linz Incineration Plant	Reststoff-Heizkraftwerk der LINZ AG	4020
6 Austria		MSW EFW	Nikalsdorf Incineration Plant	Energie und Abfallverwertungs GmbH (ENAGES)	8712

Also available as an interactive app for your mobile / tablet.

For more information on the European EFW Dashboard and pricing, please contact:

andrew@footprintservices.co

+44 (0) 7791 304190

www.footprintservices.co